

Troubleshooting

Lateral Acceleration (Lg) Sensor

Diagnostic Trouble Code (DTC) 2-3: Lateral acceleration (Lg) sensor

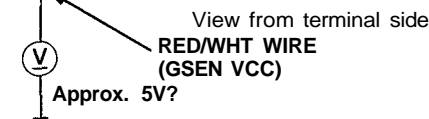
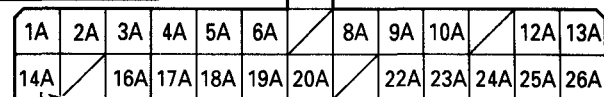
Turn the ignition switch ON.

Measure the voltage between the No. 1 terminal (+) of the Lg sensor connector and body ground.

Is there approx. 5 V?

NO

Measure the voltage between the TCS control unit 26P connector terminal 14A (+) and body ground.



Is there approx. 5 V?

YES

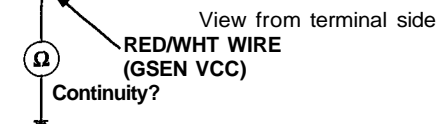
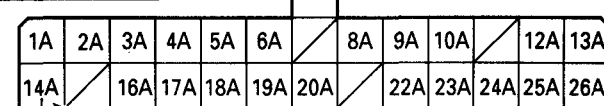
Repair open in RED/ WHT wire between the TCS control unit and Lg sensor.

NO

Turn the ignition switch OFF.

Disconnect the 26P connector from the TCS control unit and the 3P connector from the Lg sensor.

Check for continuity between the terminal 14A and body ground.



Is there continuity?

YES

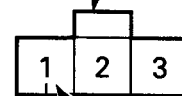
Repair short in RED/WHT wire between the TCS control unit and Lg sensor.

NO

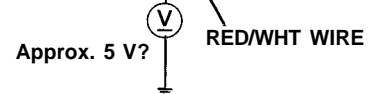
- Substitute a known-good TCS control unit and recheck.
- Check for poor connections or loose wires.

(To page 19-115)

Lg SENSOR 3P CONNECTOR (HARNESS SIDE)

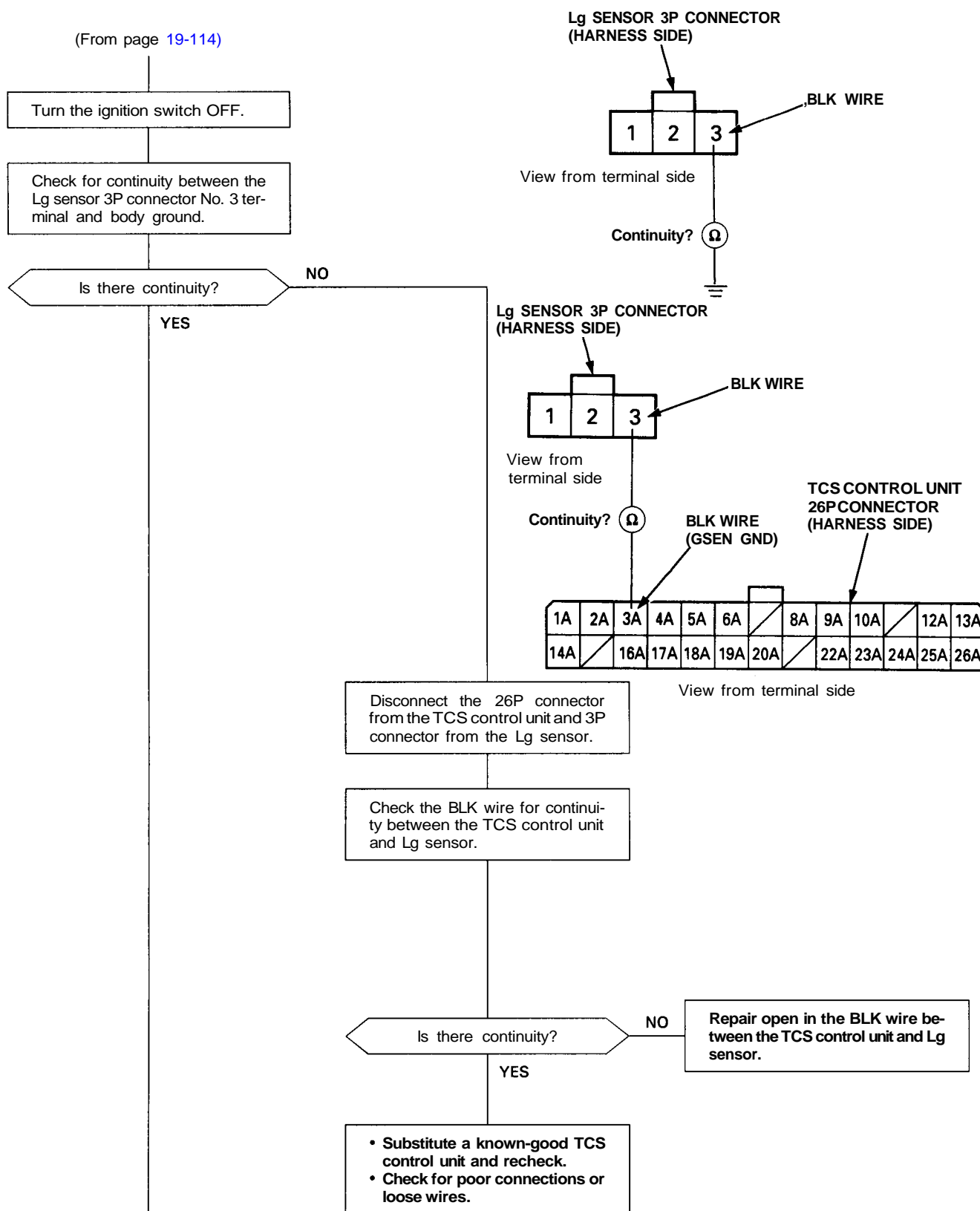


View from terminal side



TCS CONTROL UNIT 26P CONNECTOR (HARNESS SIDE)

TCS CONTROL UNIT 26P CONNECTOR (HARNESS SIDE)



(To page 19-116)

(cont'd)

Troubleshooting

Lateral Acceleration (Lg) Sensor (cont'd)

(From page 19-115)

Turn the ignition switch ON.

Measure the voltage between the No. 2 terminal (+) of the Lg sensor connector and body ground.

Is there approx. 2.5 V?

YES

NO

Turn the ignition switch OFF.

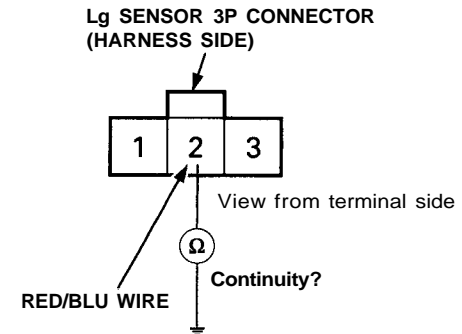
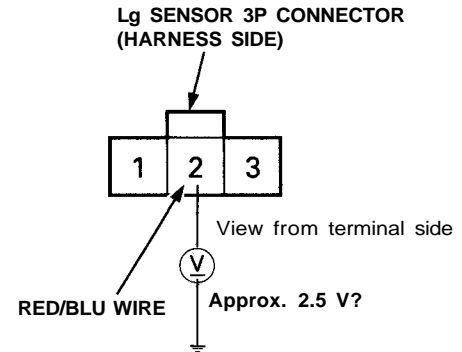
Disconnect the 26P connector from the TCS control unit and the 3P connector from the Lg sensor.

Check for continuity between the No. 2 terminal and body ground.

Is there continuity?

NO

Replace the Lg sensor.



Repair short in RED/BLU wire between the TCS control unit and Lg sensor.

Turn the ignition switch OFF.

Disconnect the 26P connector from the TCS control unit and the 3P connector from the Lg sensor.

Check the RED/BLU wire for continuity between the TCS control unit and the Lg sensor.

Is there continuity?

YES

NO

Repair open in RED/BLU wire between the TCS control unit and Lg sensor.

Check the Lg sensor function (see page 19-153).

Does it work properly?

NO

YES

- Substitute a known-good TCS control unit and recheck.
- Check for poor connections or loose wires.

Replace the Lg sensor.